

2025 MMU Rebate Request Form - Residential

Customer Name: _____

Address: _____

Account #: _____

Type of Rebates	NEW Rebate \$	REPLACEMENT Rebate \$	\$ _____
Ground Coupled Heat Pump			
Any type of GSHP w/ or w/o DeSuperHeater	\$1400 per Ton	\$750 per Ton	\$ _____
NOTE: Maximum Limits <=30% Cost/Unit Installed - No more than \$10k/Home			

Air-to-Air Heat Pump			
If no back-up heat or back-up heat is propane or natural gas then	\$500 per Ton	\$500 per Ton	\$ _____
If back-up heat is electric	\$700 per Ton	\$700 per Ton	\$ _____
NOTE: Maximum Limits <=30% Cost/Unit Installed - No more than \$10k/Home			

Ductless Mini-Split Heat Pump			
Any type of ductless mini split (must be Energy Star Certified)			
If no back-up heat or back-up heat is propane or natural gas	\$500 per Ton	\$500 per Ton	\$ _____
If back-up heat is electric	\$700 per Ton	\$700 per Ton	\$ _____
NOTE: Maximum rebate of <=15% Equip Cost - No more than \$5k/Home			
2 Units per Single Family Dwelling/Outbuilding, 1 Unit per Family/Multi-Family Dwelling			

Controlled Water Heaters - >50 Gal & >=90 % efficient			
50 Gallons	\$300 per Unit	\$0	\$ _____
51 gallons - 75 gallons	\$350 per Unit	\$0	\$ _____
76 gallons - 85 gallons	\$400 per Unit	\$0	\$ _____
86 gallons - 105+ gallons	\$500 per Unit	\$0	\$ _____
Requires Load Management Switch Installed/Lump Sum or 30% of cost, apply lessor of two			
		switch #	

Building Insulation - Primary Electric Heat			
Must be professionally installed: Blown-in, Spray Foam, AeroShield, Insulating Concrete Forms, Rigid Styrofoam Panels and/or Structural Panels	20% of Cost	20% of Cost	\$ _____
NOTE: Maximum \$800 per Building per Year			

Electric Vehicle Chargers			
Level 2 Chargers: 208-240V	NEW - 50% cost, max of \$750 per charger		\$ _____
Must be hardwired and installed to meet all codes			
Member required to provide charger make, model, S/N, specifications.			
Cannot back-feed into the system			
Must have Load Control Switch			
Must have built-in accessible meter or MMU meter installed			
NOTE: Maximum 2 EV chargers per household			

INSULATION

GENERAL BUILDING INSULATION

New 20% of cost
Replacement 20% of cost

- Blown-in, spray foam, AeroShield, insulating concrete forms, rigid styrofoam panels and/or structural insulated panels. Building must have electric heat as primary heating source.
- Maximum rebate not to exceed \$800 per building, per year.
- Rebates apply to new and replacement units.

MAKING HOME IMPROVEMENTS?

Ensure the safety of your worksitel! Powerlines can be both above and below ground. So before you dig, call Iowa One Call at **1-800-292-8989** to request underground utility location and ALWAYS look up and look out! Contact our office immediately if you're working in close proximity to overhead electric power lines.

ENERGY & DEMAND

Electricity is generated based on the real-time demand of those who consume it. When demand is high, supply can become an issue.

Peak demand occurs when the need for electricity is highest. For us, this is typically during the evening when families return home, cook dinner, and use appliances. Weather can also play a big factor in the demand for energy. High demand generally occurs on hot, humid days in the summer or extreme cold days in the winter. Using electricity during these peak demand periods costs more because more generation is required.

By scaling back our demand on the energy grid and staggering energy use, we can work together to ensure that we can avoid purchasing power during periods of extreme cold or excessive heat, when costs are at their highest.

Why would an electric company offer incentives for their customers to use LESS of their product?

BECAUSE WE BELIEVE THE GREENEST KILOWATT-HOUR IS THE ONE YOU NEVER USE.

WIMECA (Western Iowa Municipal Electric Cooperative Association) is a not-for-profit electric cooperative providing safe, reliable, affordable, and environmentally responsible power to our 6,385 member-owners living in west central Iowa.

WIMECA has invested over \$231,000 over the past five years, contributing to over 4.5 million kilowatt-hours (kWh) of energy savings over the life of the measures installed. This savings represents enough electricity to power more than 429 homes for a full year!

Manning Municipal Utilities

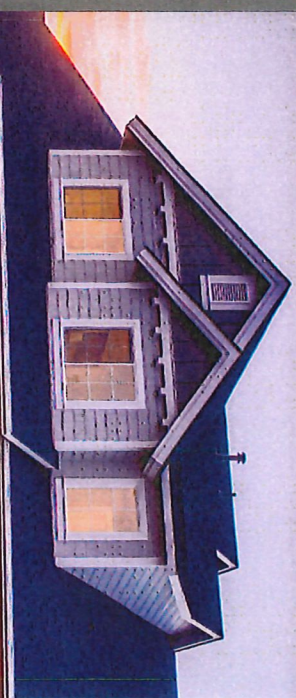
321 Center St.
Manning, IA 51455
Phone: 712-655-3905
Office Hours: 8:00 am-4:30 pm M-F

Please report all power outages and emergencies, 24 hours a day, by calling 712-655-3905.

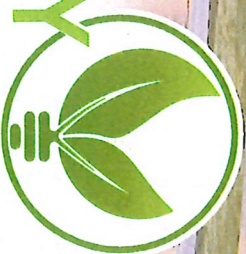
HOW TO REACH US

Visit www.mnuia.com to submit non-outage or non-emergency related inquiries and a customer care representative will be in touch or call **712-655-3905** during our business hours (8:00 a.m. to 4:30 p.m., M-F).

RESIDENTIAL



2025 ENERGY EFFICIENCY PROGRAMS



Manning MUNICIPAL UTILITIES

ELECTRIC • FIBER • GAS

712-655-3905

www.mnuia.com

HEAT PUMPS

GROUND COUPLED HEAT PUMP

Any type, with or without De-Superheater

New \$1,400/ton
Replacement \$750/ton

- Maximum rebate allows 30% of cost up to \$10,000/home.

AIR-TO-AIR HEAT PUMP

Any type.

If backup heat is Electric:

New \$700/ton
Replacement \$700/ton

If backup heat is None/Propane/Natural Gas:

New \$500/ton
Replacement \$500/ton

- Maximum rebate amount allows 30% of cost up to \$10,000/home.

DUCTLESS MINI-SPLIT HEAT PUMP

Any type; Must be ENERGY STAR® certified.

If backup heat is Electric:

New \$700/ton
Replacement \$700/ton

If backup heat is None/Propane/Natural Gas:

New \$500/ton
Replacement \$500/ton

- Limit two (2) units per single family dwelling or out-building, or limit one (1) unit per family per multi-family dwelling.
- Maximum rebate not to exceed 15% of the cost up to \$5,000/home.



SWITCH MAKES CENTS

LOAD MANAGEMENT PROGRAM

RESIDENTIAL LOAD CONTROL

Switch Makes Cents participants agree to have radio-controlled switches installed on qualifying equipment. You save money because special rates or credits are available on all equipment connected to the switch. When electric demand peaks, the switches cycle the equipment off and on to reduce the electric peak, thus helping decrease electric costs. The equipment automatically returns to normal operation when the cooperative's electric demand returns to normal levels. Most Switch Makes Cents participants agree that comfort levels are maintained in the home even when the equipment is switched off periodically during high demand peaks. Contact our office for more information.

** If a renewable energy facility, such as wind, solar, biomass or hydro is utilized as a source of generation or as an alternate/supplemental energy supply at the member/consumer location, rebate and load management programs are available ONLY if the renewable energy facility is fully (100%) put into the grid. The renewable energy facility may not utilize net metering, nor first source a load before feeding the electric grid.

CONTROLLED WATER HEATERS

Energy Factor (EF) of 90% or greater on 50 gallon units or larger.

50 Gallons \$300/unit
51 Gallons - 75 Gallons \$350/unit
76 Gallons - 85 Gallons \$400/unit
86 Gallons - 105+ Gallons \$500/unit

- Must be for hot water use only (not space heating).
- Storage-only units with no operating electric elements do not qualify for this rebate.
- Can be either conventional resistive or heat pump type water heaters.
- Does not apply to on-demand or tankless water heater systems.
- Maximum rebate is lump sum or 30% of cost, whichever is lesser of the two.
- Rebates apply to new and replacement units.

ELECTRIC VEHICLE CHARGER

LEVEL 2 CHARGERS 50% of cost

- Must be a Level 2 charger (208-240V).
- Member must provide charger make, model, serial number, and specifications.
- Must have built-in, accessible meter or utility meter installed.
- Load control switch required.
- Must be hardwired and installed to meet all codes.
- Cannot back-feed into the system.
- Maximum rebate not to exceed \$750 per charger.
- Rebate applies to new units only.

2025 MMU Rebate Request Form - Commercial

Customer Name: _____

Address: _____

Account #: _____

Type of Rebates	NEW Rebate \$	REPLACEMENT Rebate \$	\$
Ground Coupled Heat Pump			
Any type of GSHP w/ or w/o DeSuperHeater	\$1400 per Ton	\$750 per Ton	\$ _____
<=30% Cost/Unit Installed - No more than \$50k/Business or Farm			

Air-to-Air Heat Pump			
If no back-up heat or back-up heat is propane or natural gas then	\$500 per Ton	\$500 per Ton	\$ _____
If back-up heat is electric	\$700 per Ton	\$700 per Ton	\$ _____
<=30% Cost/Unit Installed - No more than \$50k/Business or Farm			

Ductless Mini-Split Heat Pump			
Any type of ductless mini split (must be Energy Star Certified)			
If no back-up heat or back-up heat is propane or natural gas	\$500 per Ton	\$500 per Ton	\$ _____
If back-up heat is electric	\$700 per Ton	\$700 per Ton	\$ _____
NOTE: Maximum rebate of <=15% Equip Cost or \$10/Business/Farm & 1 Rebate/Leasable Room			

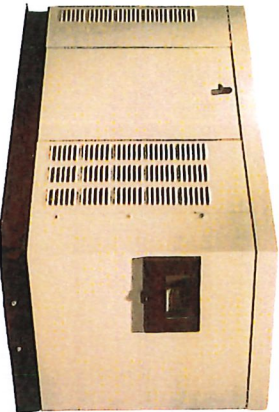
Controlled Non-Residential Water Heaters - >50 Gal & >=90 % efficient			
50 Gallons	\$300 per Unit	\$0	\$ _____
51 gallons - 75 gallons	\$350 per Unit	\$0	\$ _____
76 gallons - 85 gallons	\$400 per Unit	\$0	\$ _____
86 gallons - 105+ gallons	\$500 per Unit	\$0	\$ _____
Requires Load Management Switch Installed/Lump Sum or 30% of cost, apply lessor of two			
		switch #	

Building Insulation - Primary Electric Heat			
Must be professionally installed: Blown-in, Spray Foam, AeroShield, Insulating Concrete Forms, Rigid Styrofoam Panels and/or Structural Panels	10% of Cost	\$0	\$ _____
NOTE: Maximum \$2,000 per Building/Year			

Electric Vehicle Chargers			
Level 2 Chargers: 2.9 kW-14kW, 208-240V	NEW - 50% cost, max of \$1,200 per charger		\$ _____
Must be hardwired and installed to meet all codes			
Member required to provide charger make, model, S/N, specifications.			
Cannot back-feed into the system			
Load Control Switch Required			
Must have built-in accessible meter or MMU meter installed			

STANDBY GENERATORS

If you own a generator large enough to handle your location's entire electric load, you could be saving through our Generator Program. By allowing the Cooperative to run your generator to source your load during a peak period, **you receive a lower electric rate all month long.**



By controlling load use, the Manning Municipal Utilities saves money on our wholesale power cost allowing us to pass that savings on to our customers.

To find out what you could be saving, contact our member service department for more information.

WORKSITE SAFETY

Ensure the safety of your worksite! Powerlines can be both above and below ground. So before you dig, call Iowa One Call at **1-800-292-8989** to request underground utility location and ALWAYS look up and look out! Contact our office immediately if you're working in close proximity to overhead electric power lines.

ADDITIONAL ENERGY SAVINGS

Contact us for more information regarding additional energy efficiency opportunities for Commercial & Industrial and Agricultural applications, such as:

- Commercial Energy Audits
- Account Reviews

Why would an electric company offer incentives for their customers to use LESS of their product?

BECAUSE WE BELIEVE THE GREENEST KILOWATT-HOUR IS THE ONE YOU NEVER USE.

WIMECA (Western Iowa Municipal Electric Cooperative Association) is a not-for-profit electric cooperative providing safe, reliable, affordable, and environmentally responsible power to our 6,385 member-owners living in west central Iowa.

WIMECA has invested over \$231,000 over the past five years, contributing to over 4.5 million kilowatt-hours (kWh) of energy savings over the life of the measures installed. This savings represents enough electricity to power more than 429 homes for a full year!

Manning Municipal Utilities

321 Center St.
Manning, IA 51455
Phone: 712-655-3905
Office Hours: 8:00 am-4:30 pm M-F

Please report all power outages and emergencies, 24 hours a day, by calling 712-655-3905.

HOW TO REACH US

Visit www.mmuia.com to submit non-outage or non-emergency related inquiries and a customer care representative will be in touch or call **712-655-3905** during our business hours (8:00 a.m. to 4:30 p.m., M-F).

COMMERCIAL & INDUSTRIAL AND AGRICULTURAL

2025 ENERGY EFFICIENCY PROGRAMS



Manning
MUNICIPAL UTILITIES

ELECTRIC • FIBER • GAS

712-655-3905

www.mmuia.com

HEAT PUMPS

LARGE GROUND COUPLED HEAT PUMP

Any type, with or without De-Superheater.

New	\$1,400/ton
Replacement	\$750/ton
• Maximum rebate amount allows up to 30% of cost up to \$50,000/business/farm.	

AIR-TO-AIR HEAT PUMP

Any type.

If backup heat is Electric:	
New	\$700/ton
Replacement	\$700/ton

If backup heat is None/Propane/Natural Gas:

New	\$500/ton
Replacement	\$500/ton
• Maximum rebate allows up to 30% of cost of unit up to \$50,000/business/farm.	

DUCTLESS MINI-SPLIT HEAT PUMP

Any type. Must be ENERGY STAR® certified.

If backup heat is Electric:	
New	\$700/ton
Replacement	\$700/ton

If backup heat is None/Propane/Natural Gas:

New	\$500/ton
Replacement	\$500/ton
• Limit 1 unit per lease-able room.	
• Maximum rebate allows up to 15% up to \$10,000/business/farm.	



SWITCH MAKES CENTS

LOAD MANAGEMENT PROGRAM

COMMERCIAL & INDUSTRIAL AND AGRICULTURAL LOAD CONTROL

Switch Makes Cents participants agree to have radio-controlled switches installed on qualifying equipment. You save money because special rates or credits are available on all equipment connected to the switch. When electric demand peaks, the switches cycle the equipment off and on to reduce the electric peak, thus helping decrease electric costs. The equipment automatically returns to normal operation when the cooperative's electric demand returns to normal levels. Most Switch Makes Cents participants agree that comfort levels are maintained in the home even when the equipment is switched off periodically during high demand peaks. Contact our office for more information.

*** If a renewable energy facility, such as wind, solar, biomass or hydro is utilized as a source of generation or as an alternate/supplemental energy supply at the member/consumer location, rebate and load management programs are available ONLY if the renewable energy facility is fully (100%) put into the grid. The renewable energy facility may not utilize net metering, nor first source a load before feeding the electric grid.

CONTROLLED WATER HEATERS

Energy Factor (EF) of 90% or greater on 50 gallon units or larger.

50 Gallons	\$300/unit
51 Gallons - 75 Gallons	\$350/unit
76 Gallons - 85 Gallons	\$400/unit
86 Gallons - 105+ Gallons	\$500/unit
• Must be for hot water use only (not space heating).	

- Storage-only units with no operating electric elements do not qualify for this rebate.
- Can be either conventional resistive or heat pump type water heaters.
- Does not apply to on-demand or tankless water heater systems.
- Rebate applies to new and replacement units.
- Maximum rebate is lump sum or 30% of cost, whichever is lesser of the two.

INSULATION

GENERAL BUILDING INSULATION

Professionally installed 10% of cost

- Blown-in, spray foam, Aeroshield, insulating concrete forms, rigid styrofoam panels and/or structural insulated panels. Building must have electric heat as primary heating source.
- Rebate applies to new and replacement units.
- Maximum rebate not to exceed \$2,000 per building per year.

ELECTRIC VEHICLE CHARGER

LEVEL 2 CHARGERS 50% of cost

- Must be a Level 2 charger (208-240V).
- Member must provide charger make, model, serial number, and specifications.
- Must have built-in, accessible meter or utility meter installed.
- Load control switch required.
- Must be hardwired and installed to meet all codes.
- Cannot back-feed into the system.
- Rebate applies to new units only.
- Maximum rebate not to exceed \$1,200 per charger.